
September 2021 SPED Update

1 message

SPED <constantcontact@spedweb.com>
Reply-To: constantcontact@spedweb.com
To: joomla@spedweb.com

Mon, Sep 20, 2021 at 5:16 PM



Society of Piping Engineers and Designers

September 2021 SPED Update



Membership News

New Members and Renewals

David Bissett
Colin Brenner
Charles C. Oguamanam
Ahmed Elrabiey
Carlos Castillo
Georgio Holt
Kim Campbell
John Fogarty
Tyson Johnson SPED Bundle
Pierre Folligan
Mohamed Ghonim
Francois Haesler
Jean Kliebert

Corporate Memberships

NV5 Large Corporate Membership

PPD Certification Achieved

Stephen Blake, PPD 1

Video Series Purchase

NV5

PPD Certification Enrolments

Colin Brenner
Amgad Georgy
Joshua Ramcharan

PBC Completion

Douglas Lyons
Andy Andrews

Piper Boot Camp and Process Plant Layout Enrolments

Tyson Johnson SPED Bundle
John Fogarty
Douglas Lyons

High Purity Course Completion

Bir Khangura

How to Install a Centrifugal Pump

"The most crucial factor in ensuring that your pump system runs for years without causing frequent problems is to – get the installation right. You may have chosen a high-quality

pump, but without the right installation procedure, your pump is likely to face numerous operational challenges."

<https://www.sintechpumps.com/pumps/centrifugal-pumps/how-to-install-a-centrifugal-pump/>

Weasel Words Three

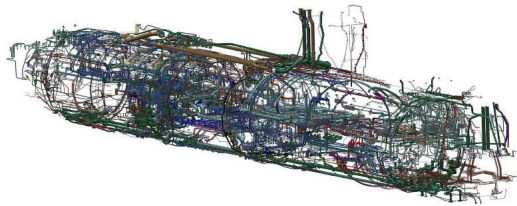
Sean Moran

<http://scitechconnect.elsevier.com/weasel-words-three/>

Looking Beyond Globe Control Valves

"Globe control valves were developed and put into use more than a century ago. Not only are they the original, but for a long period of time, they were the only type of control valve available. However, there have been some substantial advancements in the field of control valves in the last 20 to 50 years. These advancements have led to the design of more modern rotary control valves that offer many advantages over their globe control valve ancestors."

<https://www.piprocessinstrumentation.com/valves-actuators/article/21224199/looking-beyond-globe-control-valves>



Considering Check Valve Location

"A check valve on the suction side of a centrifugal process pump will likely starve the pump of energy. Now having said that, some lift type pumps have what they call a 'foot valve' on the suction pipe."

<https://www.piprocessinstrumentation.com/instrumentation/flow-measurement/article/15560030/pump-guy-mailbag-considering-check-valve-location>

Free to SPED Members - High Purity Piping Module

The SPED Board has released its new module on High Purity Piping. The module is free to SPED members. High-Purity piping is important in many industries, including:

- Food, Dairy, and Beverage

- Pharmaceutical
- Bioprocessing
- Semi-Conductor

This module is a quick overview of the standards and practices utilized in High-Purity piping and equipment.

The module is free to all SPED members. Registration can be done yourself, with the enrollment key given to you by this office.

For more information contact
catherine_van_der_walt@spedweb.com

Decoding Pressure Vessel Design

<https://www.chemengonline.com/decoding-pressure-vessel-design/?printmode=1>

SMEs Wanted for PPD Advisory Committee and New SPED Courses

The goal here is to collect knowledge of specialty design practices and unique process equipment found in non-refining / power plant disciplines which utilize piping.

- cryogenics piping
- polymer piping
- solids (powders) piping
- food grade piping
- brewery piping
- steam piping
- pharmaceutical piping
- electronics fab piping
- pulp & paper

SPED Training and Certification News

The spedexams.com PPD Exams website has been merged into the SPED.education PPD Courses website. This change will save on server space and consolidate training-related content.

Anton's PipingDesigners.com Jobs Board Has Been Rebooted



Special COVID-19 Home Study Pricing Continues for September and October 2021

SPED recognizes that many of our members are under stay-at-home orders. We must work and study away from workplaces and schools.

Continuing for the months of September and October, SPED is offering a bundle price for its two online courses, *Piper Bootcamp* and *Process Plant Layout*. For the price of the course (membership required), both the course and PPD Certification Testing and application is included. This is a US\$250 savings.

We hope this helps utilize the time productively. Please stay safe!

For more information contact
catherine_van_der_walt@spedweb.com

REMINDER TO SPED MEMBERS TO UPDATE THEIR PROFILES AND PROVIDE A NON-WORK CONTACT EMAIL ADDRESS

Many SPED members use their work email address when they join SPED, but this means that we will lose your contact details if you change jobs. Login at spedweb.com and keep your email address up-to-date.

Real Ethical Problems #4: Drinking The Koolaid

Sean Moran (Again) on LinkedIn

<https://www.linkedin.com/pulse/real-ethical-problems-4-drinking-koolaid-sean-moran-c-eng/>

A.I.'s Fatal Flaw

upFront.eZine

"Parallel processing cannot be used in most areas of CAD, because user actions cannot be predicted. Prediction is required before the software can split the command being processed

among multiple CPUs, then merge the results together afterwards. It is the nature of CAD that the software cannot predict the outcome of our actions. The same holds for AI: the actions of users cannot be predicted sufficiently for AI to assist."

<https://www.upfrontzine.com/2021/09/upf-1105.html>

There's No Fool...

Sean Moran One More Time

<https://www.processindustryinformer.com/theres-no-fool>

Types of Valve Actuators

"A valve actuator is a mechanical device that uses a power source to operate a valve. This power source can be electric, pneumatic (compressed air), or hydraulic (the flow of oil). There are two main types of actuators, one for each of the two main types of valves that require them. They are rotary and linear."

<https://assuredautomation.com/actuated-valve-training/types-of-valve-actuators.php>

The image is a promotional flyer for Professional Piping Designer Certification (PPD). At the top, it says "Professional Piping Designer Certification" and "GET CERTIFIED WITH SPED". Below this, it lists the levels of certification: Level I (Basic PPD, Property Trained), Level II (Advanced PPD, Organize Work), Level III (Senior PPD, Independent Producer), and Level IV (Lead PPD, Manager, Assure Work). It also includes sections for "About Certification", "Steps to PPD Level I Certification", "Steps to PPD Level Advance", and "Two Steps to Renew". The flyer mentions that PPD offers online courses and an online Review and proctored exam to help prepare for PPD Certification. It also lists contact information for SPED, including a website (www.spedweb.com) and a phone number (1-713-960-4678).

Flexicraft is your one call for every style of expansion joint and flexible connector.



(Click link for video)

Don't forget that SPED is always on the lookout for member-written piping-related articles to publish at the website

See you all next time!

SPED | 9668 Westheimer Road, Suite 200 - 242, Houston, TX 77063

[Unsubscribe joomla@spedweb.com](mailto:joomla@spedweb.com)

[Update Profile](#) | [Constant Contact Data Notice](#)

Sent by constantcontact@spedweb.com powered by



Try email marketing for free today!